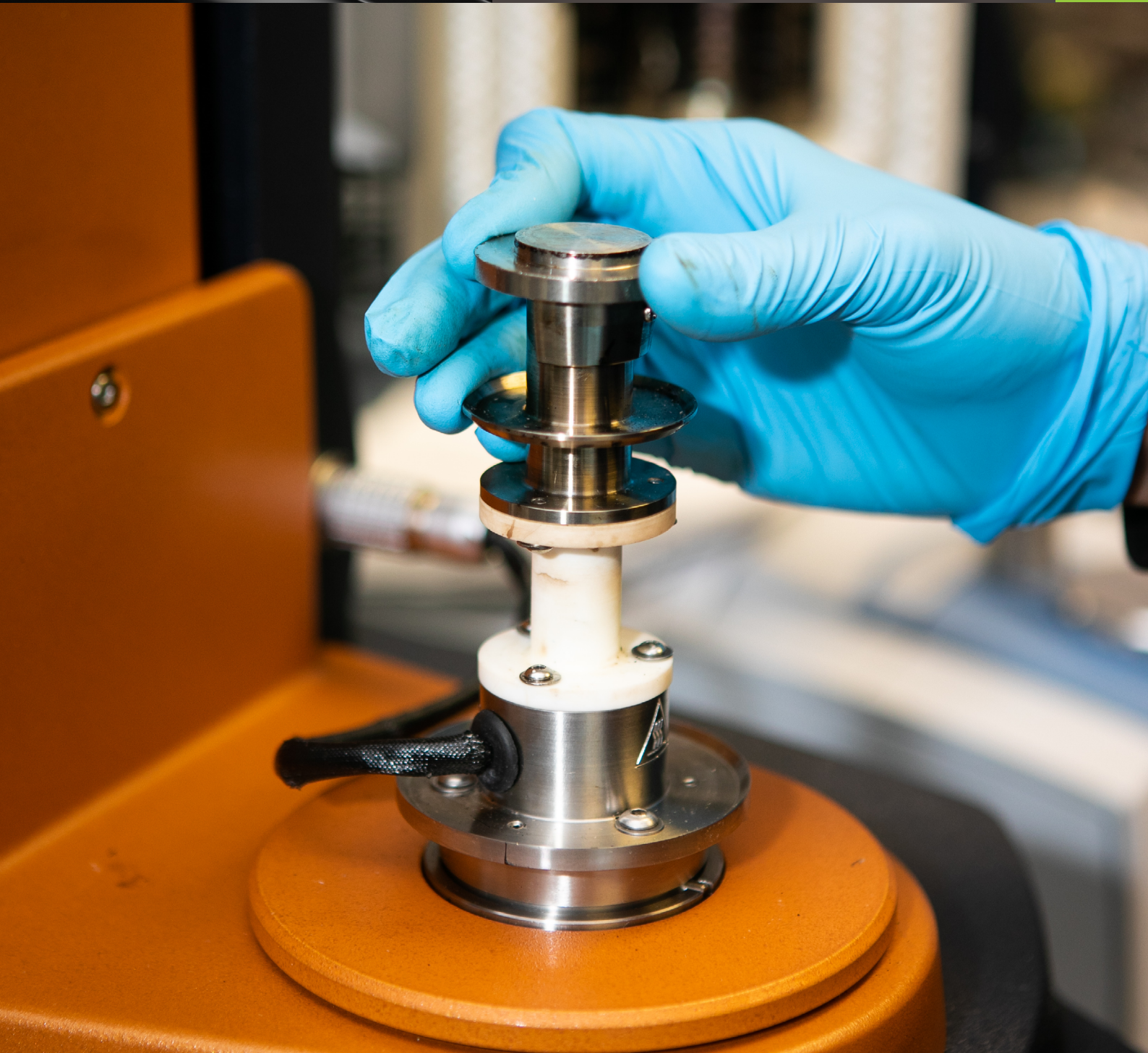




Smart Solutions
Powered by Science

Laboratory Services Capability Statement September 2025

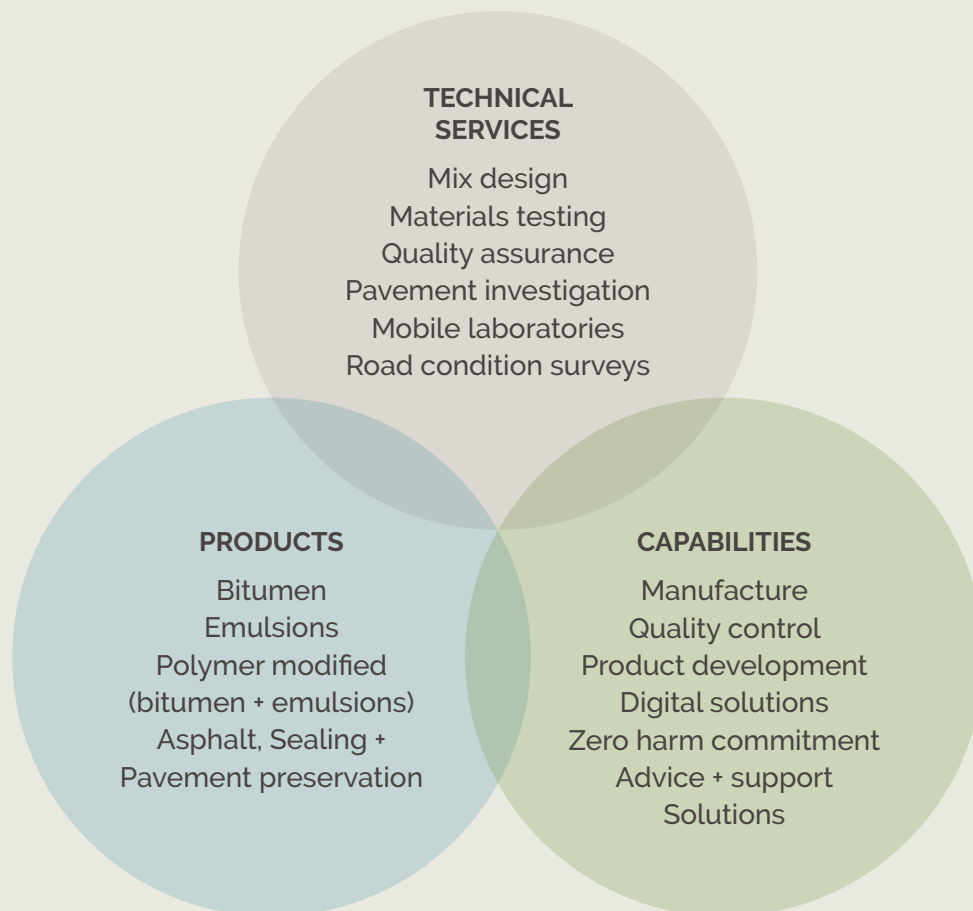


Innovative road + pavement solutions

At Road Science, we lead with innovation
— delivering smart, science-driven
solutions that build safer, stronger, and
more resilient roads for New Zealand.

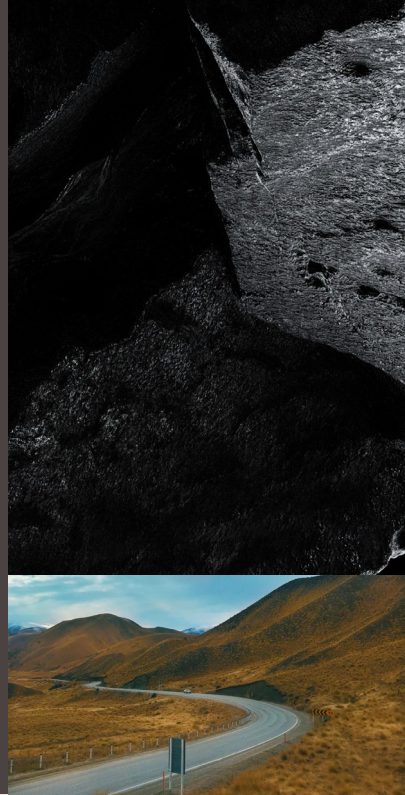


Our complete solution



Our values

Our values are the foundation of everything we do at Road Science reflecting who we are, how we work, and the impact we strive to make across the road and pavements industry.



We are listeners

We believe great outcomes start with listening - to each other and to our customers. By asking the right questions and reflecting with empathy, we identify the real challenges to be solved. This helps us to build trust, set realistic expectations, and deliver lasting value.

Our culture values people first. We're inclusive, open to diverse thought, and easy to work with - never defensive. We stay agile in how we deliver, back each other as a team, and work with shared purpose. Together, we aim not to over promise, but to exceed expectations through honest relationships, unity, and consistent follow-through.



We are your trusted experts

We're a passionate team of thinkers and doers - industry-recognised for our curiosity, craft and commitment to solving tomorrow's problems. We combine deep technical knowledge with genuine care for people, always designing for safer outcomes and zero harm.

Proudly Kiwi-made, we build trust through consistent delivery, open communication and humble confidence in what we do. We stay present - in the field, in the industry and in our relationships - because great outcomes are built together. We learn from the past, challenge ourselves with new thinking and take pride in doing what we say we'll do, every time.

We don't just follow best practice - we help shape what's next.



We deliver solutions

Every solution is a team effort - from plant operators to mobile crews, office staff to lab technicians. We combine deep expertise with agility, working together to solve the real problems our customers face.

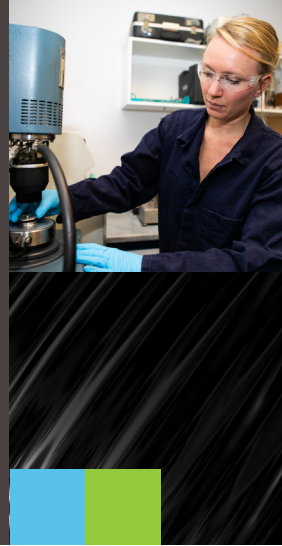
We embrace technology, adapt to change, and aren't afraid to think outside the box. We follow through, even when things get tough, learning from setbacks and staying focused on the outcome. Through strong partnerships - both within our team and with our customers - we deliver smarter, safer, and more sustainable solutions that stand the test of time.

“At Road Science, our strength lies in our people. We live our values every day - we listen, we are your trusted experts, and we deliver solutions. By fostering a culture of innovation, we unlock creativity and transform bold ideas into real-world road infrastructure solutions. Our team is committed to shaping the future of New Zealand’s roads and pavements through expertise, collaboration, and a relentless drive to make a difference.”

Doug Carrasco
General Manager
Road Science + Asphalt Production

Testing, advisory and R&D services

Advancing pavement performance with science, innovation, and technical expertise.



Laboratories: Expert testing and advisory services

Road Science offers comprehensive construction materials testing, classification, quality assurance, material design, data collection technology, pavement investigation, and expert advice. With four IANZ-accredited laboratories in Auckland, Tauranga, Wellington, and Christchurch, as well as mobile laboratories for specific projects, we ensure that you receive precise, reliable testing tailored to your needs.

Our specialised testing includes:

- **Field testing:** Test pit pavement investigation, British pendulum testing, E2 spray distribution testing
- **Aggregate testing:** Polished stone value, Repeat load triaxial testing and Foam bitumen stabilisation designs
- **Soils testing:** Hydrometer testing
- **Asphalt testing:** Asphalt mix design and performance testing including Hamburg wheel tracing and fatigue testing
- **Bitumen testing:** Multiple stress creep recovery, durability, and accelerated aging of binder
- Concrete testing

For more information on the full testing scope for each of our labs, visit [IANZ](#)

Search by 'Road Science' as your keyword to locate each of our labs.

Research and product development

Innovation isn't an add-on - it's embedded in everything we do. Our dedicated R&D facility in Tauranga leads the way in developing smarter, more resilient road solutions tailored to New Zealand's unique conditions. With a team of specialists in bitumen, emulsions, and polymer technologies, we're shaping the future of road maintenance through science, collaboration, and authentic testing.

What sets us apart is our full-service approach: from concept to full-scale delivery, every solution is grounded in real-world challenges our customers face. We listen. We collaborate. We deliver.

Our innovation process ensures solutions are scoped, developed, and delivered efficiently. By working closely with customers, operational teams, researchers, and funding partners, we can rapidly prototype and test new ideas - reducing development costs and accelerating implementation. This approach enables:

- Faster speed-to-market
- Higher likelihood of product success
- Sharper focus on customer needs
- Smarter use of resources
- Stronger collaboration and outcomes

With access to a wide network of materials expertise and technology partners, we're equipped to meet a broad range of customer requirements - delivering practical, scalable solutions that make a genuine difference.

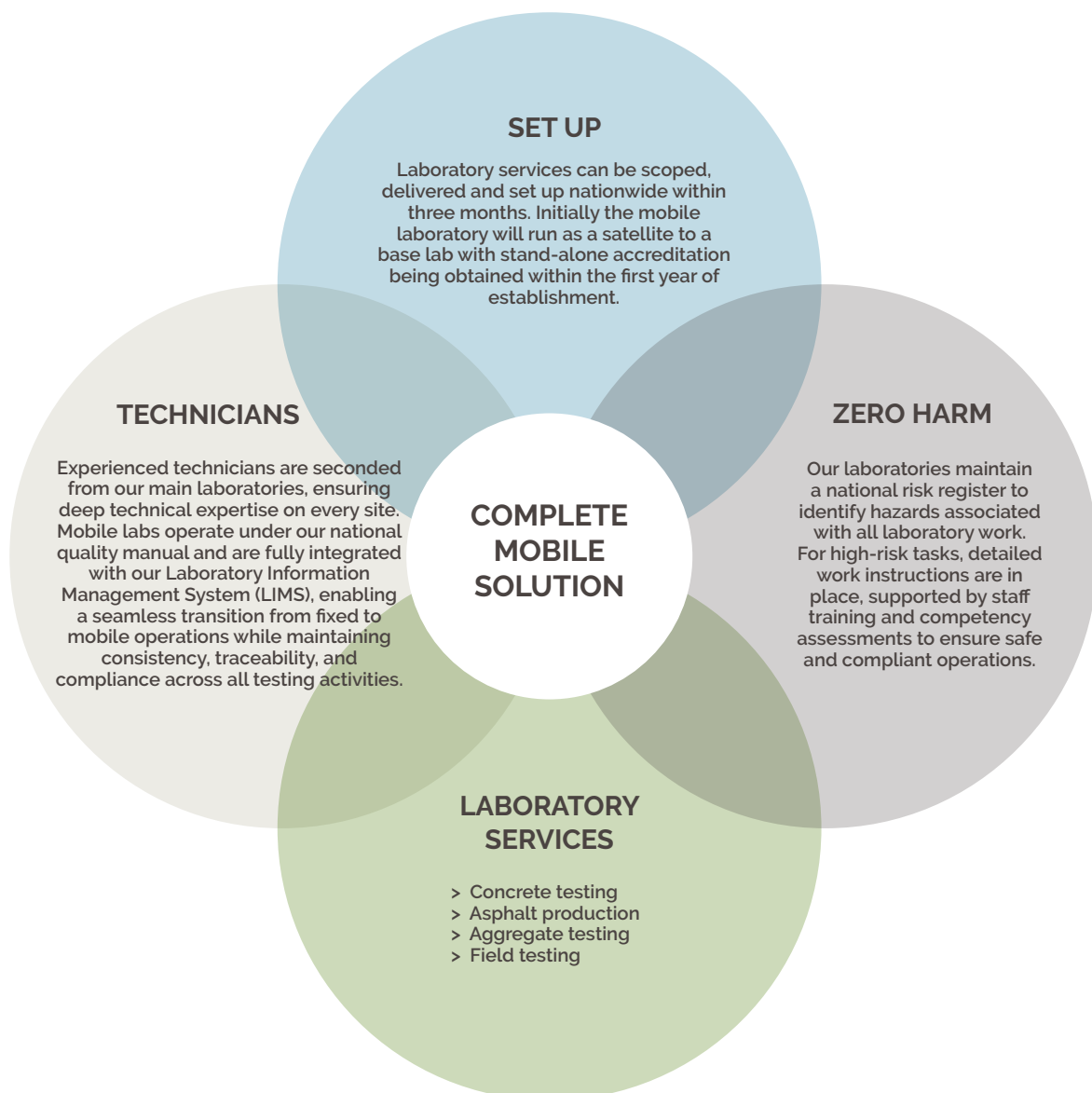
Mobile Laboratories

When on-site testing and data is needed, we deliver mobile laboratories and expertise.



Testing when and where you need it.

Road Science delivers IANZ-accredited laboratory services across New Zealand, offering a wide range of testing for the construction and manufacturing industries to ISO/IEC 17025 standards. Our mobile laboratory capability brings this same level of quality and expertise directly to your project site — reducing delays, cutting transport costs, and ensuring real-time quality assurance for civil construction materials. With proven deployments from Dunedin to Gisborne and even into the Pacific, we deliver the efficiency of on-site testing without compromising on standards



Case study

North Canterbury Transport Infrastructure Recovery (NCTIR)

Clients: Waka Kotahi + Kiwirail
Location: Kaikōura, South Island
Duration: January 2017 – December 2020
Contract type: Alliance
(Fulton Hogan, HEB, Downer, Higgins)
Value: \$3.58m



Field-ready excellence: How our mobile lab met Kaikōura's challenge

The damage caused by the 7.8-magnitude Kaikōura earthquake to the Main North Line railway and SH1 along the east coast of the South Island was unprecedented in New Zealand, and the NCTIR alliance was set-up to restore the road and rail networks. At the outset of the project, Road Science proactively mobilised laboratory staff during the early setup phase to conduct critical field testing. It soon became clear that a dedicated on-site facility would be essential to meet the project's scale and pace. In June 2017, Road Science deployed two purpose-built mobile laboratories to the site — a 2.9 x 6m and a 2.9 x 12m portacom — equipped to carry out a full suite of quality assurance services.

These mobile labs enabled on-site testing for concrete quality assurance, aggregate source and production property testing, and a range of field tests. The facility achieved IANZ accreditation (ISO/IEC 17025) for its defined scope in December 2017, ensuring all testing met the highest industry standards.

Staffing levels were flexibly scaled in line with project demand, peaking at six technicians during the height of the construction season. As project activity tapered off, Road Science strategically demobilised the mobile lab to maintain cost-efficiency, transitioning to a scaled-down on-site testing service. Remaining laboratory testing was seamlessly redirected to a base laboratory for completion, ensuring continued quality support through to project close.

OTHER KEY PROJECTS

Turitea Wind Farm (June 2020 to May 2023)
Laboratory testing spend \$1.2 million.
Scope: Concrete and field testing

Kā Huanui a Tāhuna Alliance (January 2021 to current)
Laboratory testing spend \$978,000 to date.
Scope: Aggregate and field testing

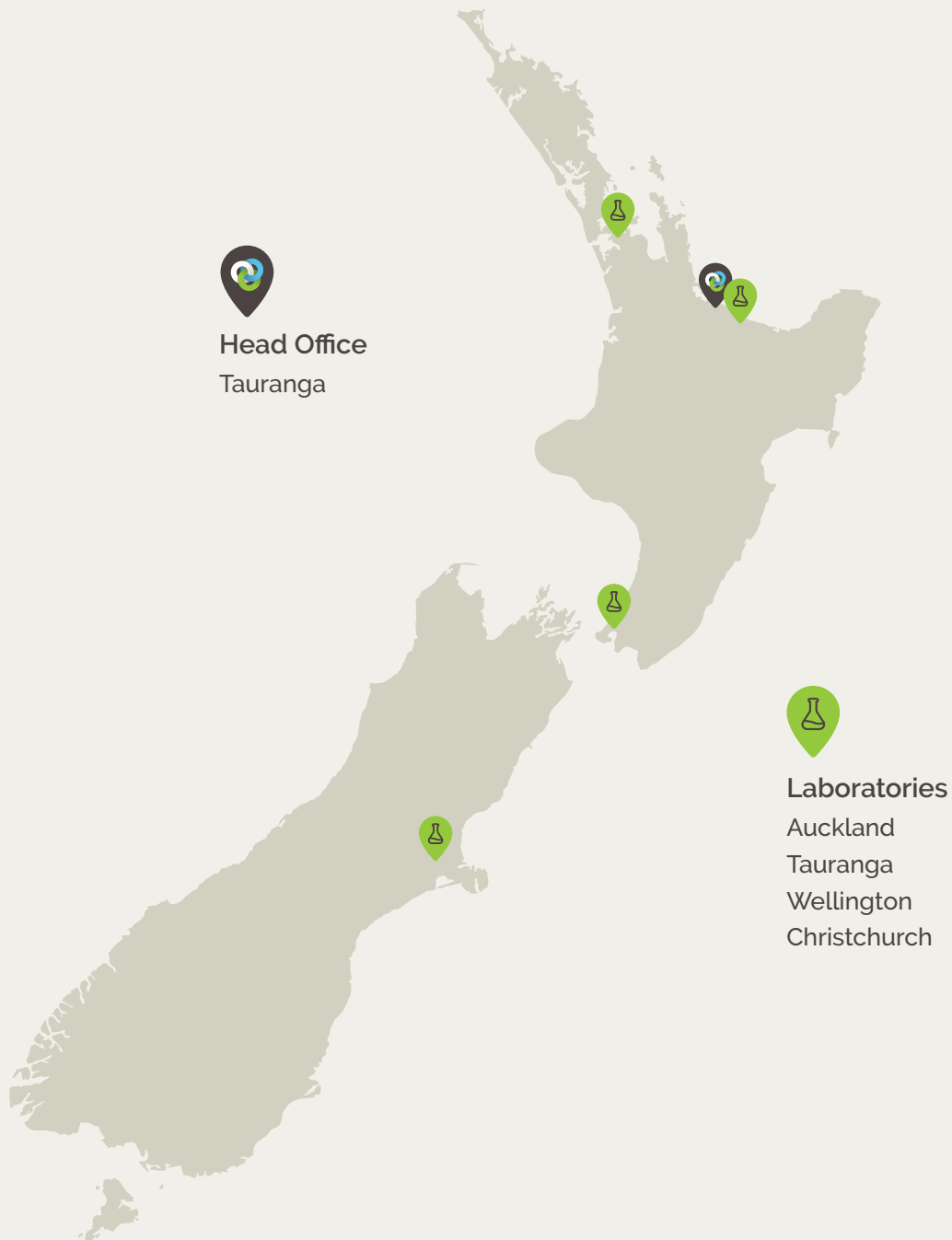
“Road Science remains at the forefront of road and pavement innovation. Their unwavering focus on customer-driven, sustainable solutions is actively shaping New Zealand’s transport infrastructure — making our roads safer, more intelligent, and future-ready.”

Murray Robertson
Managing Director
Downer New Zealand



Our locations

Nationwide laboratories and expertise ensures local support and innovative road and pavement solutions wherever your projects need us.



Key contacts

Get in touch with Road Science today —
our team is ready to support your projects
with proven expertise.

Doug Carrasco

GM Road Science + Asphalt Production

027 7037 533

doug.carrasco@downer.co.nz

Joanna Jones

Laboratory Manager - Auckland

021 413 768

joanna.jones@roadscience.co.nz

Ewan Cameron

Laboratory Manager - Tauranga

027 6837 681

ewan.cameron@roadscience.co.nz

Vicky Henderson

Technical Services Manager

027 2407 950

vicky.henderson@roadscience.co.nz

Stephen Mvere

Laboratory Manager - Wellington

027 2381 574

stephen.mvere@roadscience.co.nz

Sabine Chambon

Laboratory Manager - Christchurch

027 2415 585

sabine.chambon@roadscience.co.nz