



#### USED FOR



Waterproofing



Rutting



Ravelling



Pot Holes



Cracking

# UltraMender

Unlike traditional repair methods that often result in short-lived repairs, leading to costly and time-consuming repeated maintenance, UltraMender provides a long-term solution that prevents small issues from escalating into significant, expensive problems.

The UltraMender system leverages advanced polymer technology, allowing for application at ambient temperature, followed by rapid curing within minutes to form a tough, durable, plastic-like material.

**Versatile > Easy to Use > Long Lasting**

## Equipment

- Hard bristle broom
- Plastic wheelbarrow, bucket, or bag for mixing
- Grade 6 aggregate (for deformation repair only)
- Sand
- Plastic screed
- Compactor

## How to use guide

UltraMender is a high-performance polymeric binder designed for the repair of common pavement and surface defects found within road networks.

### Step 1: Preparation of surface

- Mark out and measure the area to be treated



- Remove loose material, sweep the surface, and ideally the surface should be dry





## Step 2: Application

- Tear foil sachet containing UltraMender binder
- Pour UltraMender on to the surface



- Use a hard bristle broom to apply the thinnest possible coat of UltraMender over the full width of the marked area. Make sure cracks are filled to 3/4 full to allow UltraMender to foam into the remaining space and prevent blisters forming.
- Application rate of UltraMender should be around 0.3L/m<sup>2</sup> (8.3m<sup>2</sup> per sachet)



## Step 3: Mix (optional)

- If only crack filling, go to step 4
- If filling deformations, mix local aggregate with UltraMender as per mixing guide on the following page



- Mix until the chip is well coated with UltraMender



- Pour mix into the deepest part of the depression and screed immediately until a level surface is achieved
- Lightly compact immediately to achieve the best finish



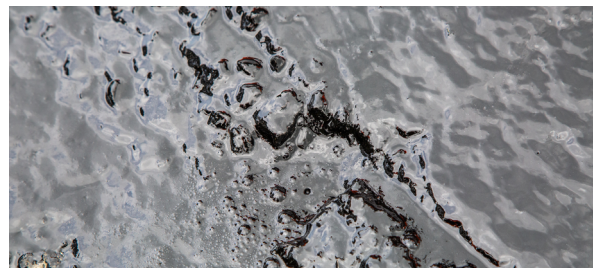
## Step 4: Blind

- Spread sand / black sand / pap over the treated area to prevent pick up on tyres
- If the road surface AND blinding material is very dry, it is recommended that water is lightly misted on top of the treatment to speed up the curing process



## Step 5: Cure

- UltraMender takes approximately 10 - 15mins to cure. During the curing process, foaming and bubbling will be observed.



## Step 6: Traffic

- Treatment is OK to be opened to traffic once blinded with sand, or once the treatment is dry to touch
- If the treated area is not under traffic, then continually roll with car tyre to pop any bubbles that form. Continue doing this until UltraMender is cured. UltraMender will form a hard, strong plastic like material once cured.



### UltraMender Mix Ratio

Diameter of repair (mm)	Coverage (m2)	Aggregate (L)	Binder
300	0.1	2	1/10 bag
450	0.2	5	1/4 bag
650	0.3	10	1/2 bag
800	0.5	15	3/4 bag
900	0.7	20	1 bag

## Mixing tips: If filling in a deformation

- Mix ratio is 20 litres of grade 6 aggregate to 2.5 litres (one packet) of UltraMender
- One shovel full of aggregate is approximately 2 litres
- UltraMender does not stick to plastic
- Use latex gloves when handling UltraMender
- If UltraMender makes contact with your skin, it will flake off over time

## Need more information?

At Road Science, we're committed to providing innovative solutions backed by engineering expertise. If you have any questions about this product, need technical guidance, or want to discuss how it fits your specific project needs, our team is here to help. Contact us today for expert advice and tailored support. Contact us via **0800 180 200** or visit our website at **roadscience.co.nz** to learn more.

The information contained in this document is, to the best of our knowledge, true and accurate, but since the conditions of use are beyond our control, any recommendations or suggestions which may be made are without guarantee and no warranty, expressed or implied, is given. We reserve the right to change this document at any time.